

DATA SHEET



Three Phase Induction Motor - Squirrel Cage

Customer :						
Product line		: W22 Brake Motor NEMA Premium Efficiency Three-Phase		Product code :		14815569
Frame	:	284/6TC		Locked rotor time	:	36s (cold) 20s (hot)
Output	:	30 HP (22 kW)		Temperature rise	:	80 K
Frequency	:	60 Hz		Duty cycle	:	Cont.(S1)
Rated voltage	:	575 V		Ambient temperature	:	-20°C to +40°C
Poles	:	4		Altitude	:	1000 m.a.s.l.
Rated current	:	28.1 A		Protection degree	:	IP55
	:	6.1x(Code G)		Cooling method	:	IC411 - TEFC
Rated speed	:	1770 rpm		Mounting	:	F-1
Rated torque	:	12.3 kgfm		Rotation ¹	:	Both (CW and CCW)
Insulation class	:	F		Noise level ²	:	63.0 dB(A)
Service factor	:	1.25		Starting method	:	Direct On Line
Moment of inertia (J)	:	0.2467 kgm ²		Approx. weight ³	:	236 kg
Design	:	B				
Output	25%	50%	75%	100%	Foundation loads	
Efficiency (%)	0.000	93.0	93.0	93.6	Max. traction	: 304 kgf
Power Factor	0.00	0.70	0.80	0.84	Max. compression	: 540 kgf
Losses at normative operating points (speed;torque), in percentage of rated output power						
P1 (0,9;1,0)	P2 (0,5;1,0)	P3 (0,25;1,0)	P4 (0,9;0,5)	P5 (0,5;0,5)	P6 (0,5;0,25)	P7 (0,25;0,25)
6.8	5.8	5.2	3.1	2.2	1.4	0.9
		<u>Drive end</u>		<u>Non drive end</u>		
Bearing type	:	6311 C3		6211 C3		
Sealing	:	V'Ring		Lip Seal		
Lubrication interval	:	20000 h		20000 h		
Lubricant amount	:	18 g		11 g		
Lubricant type	:	Mobil Polyrex EM				
Notes						
This revision replaces and cancel the previous one, which must be eliminated. (1) Looking the motor from the shaft end. (2) Measured at 1m and with tolerance of +3dB(A). (3) Approximate weight subject to changes after manufacturing process. (4) At 100% of full load.				These are average values based on tests with sinusoidal power supply, subject to the tolerances stipulated in NEMA MG-1.		
Rev.	Changes Summary			Performed	Checked	Date
Performed by						
Checked by					Page	Revision
Date	12/05/2026				1 / 3	

DATA SHEET

Three Phase Induction Motor - Squirrel Cage



Customer : _____

Brake information

Voltage: 220-240 V
Brake Torque: 26.5 kgfm

Rev.	Changes Summary	Performed	Checked	Date
Performed by				
Checked by			Page	Revision
Date	12/05/2026		2 / 3	

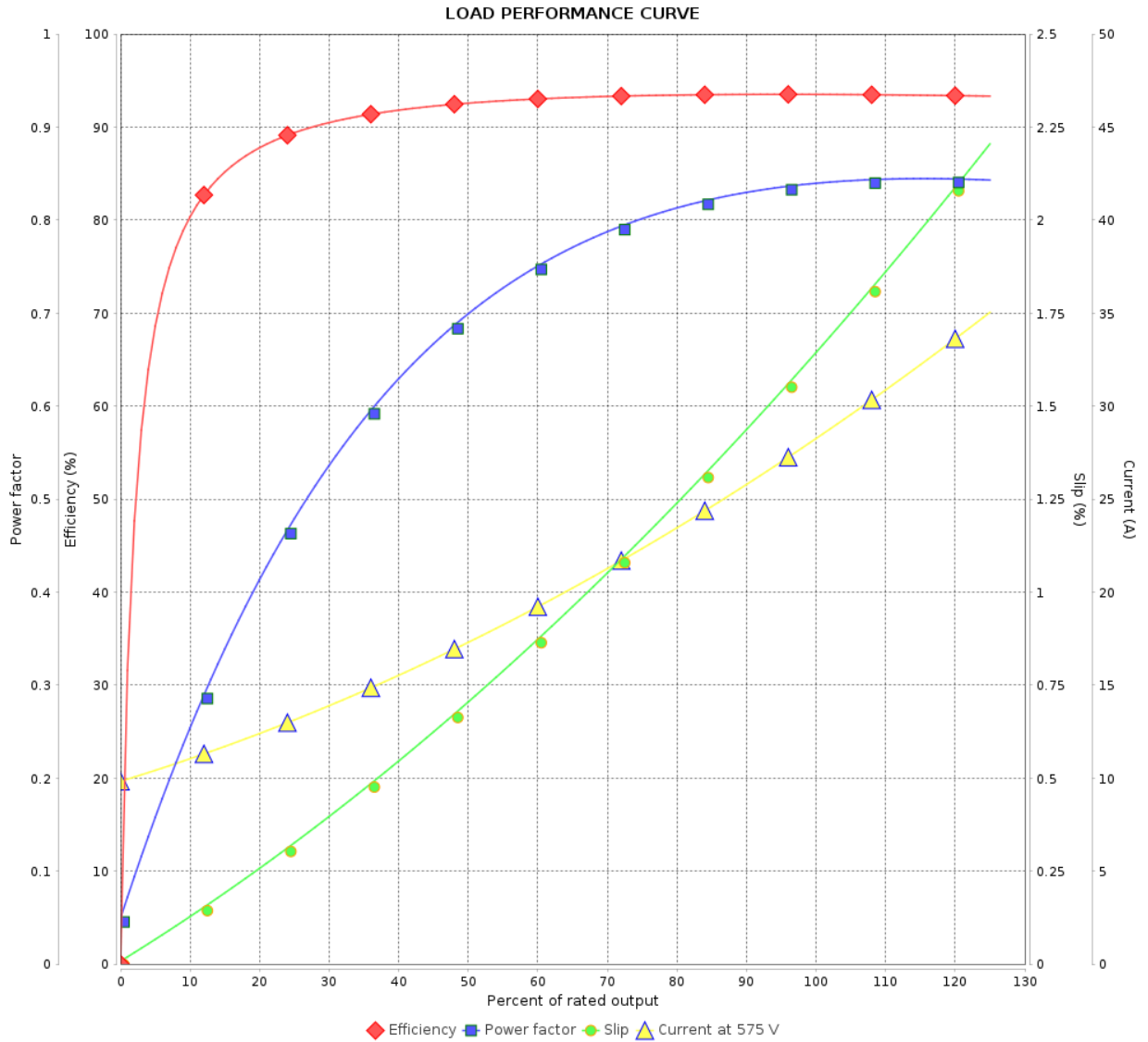
LOAD PERFORMANCE CURVE

Three Phase Induction Motor - Squirrel Cage

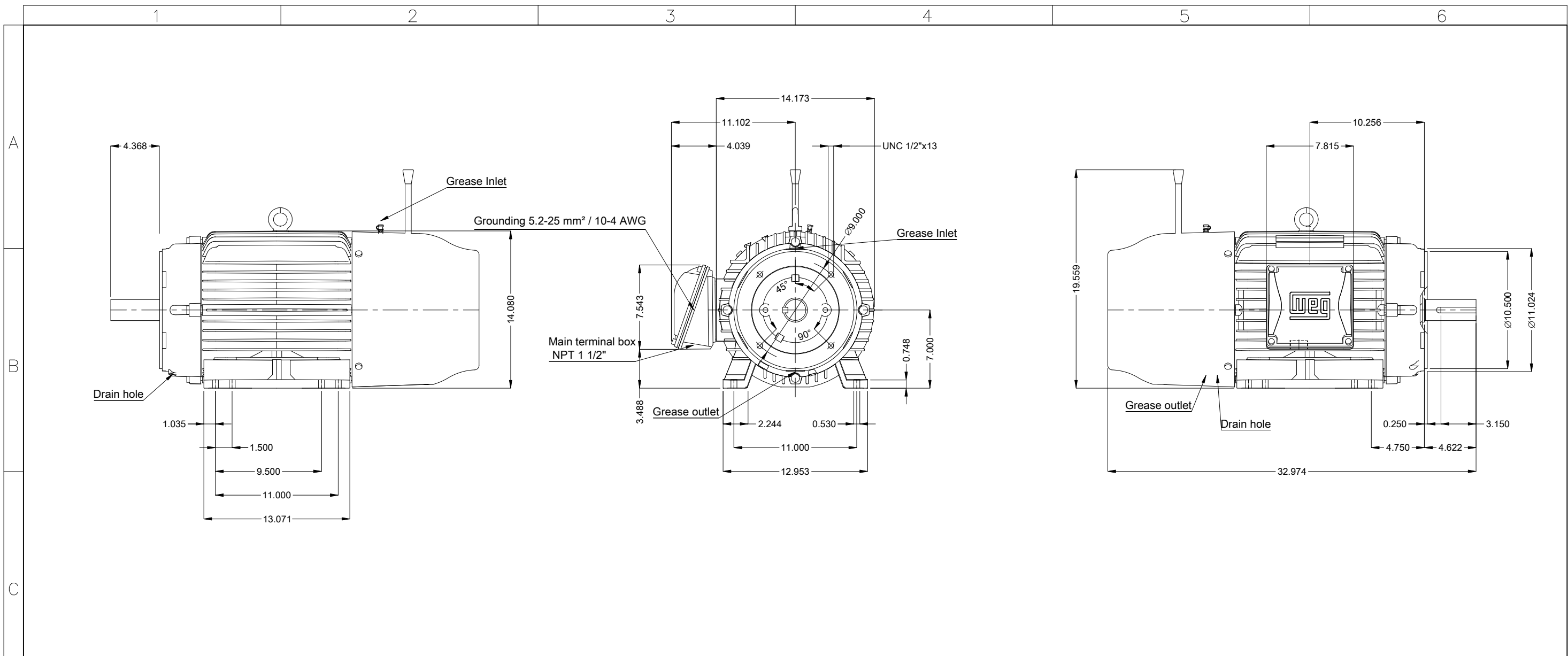


Customer :

Product line : W22 Brake Motor NEMA Premium Efficiency Three-Phase Product code : 14815569

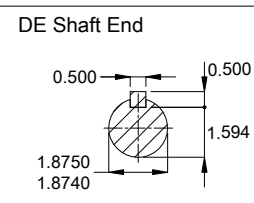


Rev.	Changes Summary	Performed	Checked	Date
Performed by				
Checked by				
Date				
			Page 3 / 3	Revision



30 HP 04 Poles 60 Hz		A	
Scale		1 : 9	
ECM	LOC	SUMMARY OF MODIFICATIONS	
EXECUTED	HYBRISUSER	EXECUTED	00
CHECKED		CHECKED	
RELEASED		RELEASED	
REL. DATE		DATE	VER

Brake 20 (260 Nm)
 Color RAL 5009
 Painting plan 203A
 Mounting NEMA F-1
 Mounting B34D



THREE PH. MOTOR W22 BRAKE MOTOR NEMA PREM. EFF.	
FRAME 284/6TC IP55 TEFC	
PREVIEW	
WDD 00	
SHEET 1 / 1	