

# DATA SHEET



## Single Phase Induction Motor - Squirrel Cage

Customer :					
Product line		: Rolled Steel Grain Dryer Single-Phase		Product code : 13976275	
Frame	:	182/4TZ	Locked rotor time	: 12s (cold) 7s (hot)	
Output	:	5 HP (3.7 kW)	Temperature rise	: 105 K	
Frequency	:	60 Hz	Duty cycle	: Cont.(S1)	
Rated voltage	:	230 V	Ambient temperature	: -20°C to +40°C	
Poles	:	2	Altitude	: 1000 m.a.s.l.	
Rated current	:	19.8 A	Protection degree	: IP55	
	:	11.3x(Code M)	Cooling method	: IC418 - TEAO	
Rated speed	:	3547 rpm	Mounting	: F-3	
Rated torque	:	1.02 kgfm	Rotation <sup>1</sup>	: Both (CW and CCW)	
Insulation class	:	F	Noise level <sup>2</sup>	: 72.0 dB(A)	
Service factor	:	1.00	Starting method	: Direct On Line	
			Approx. weight <sup>3</sup>	: 37.6 kg	
Output	25%	50%	75%	100%	
Efficiency (%)	70.7	73.4	79.9	82.9	
Power Factor	0.71	0.95	0.97	0.98	
Foundation loads					
Max. traction : 65 kgf					
Max. compression : 103 kgf					
		<u>Drive end</u>	<u>Non drive end</u>		
Bearing type	:	6206 ZZ	6205 ZZ		
Sealing	:	V'Ring	Without Bearing Seal		
Lubrication interval	:	-	-		
Lubricant amount	:	-	-		
Lubricant type	:	Mobil Polyrex EM			
Notes					
<p>This revision replaces and cancel the previous one, which must be eliminated.</p> <p>(1) Looking the motor from the shaft end.</p> <p>(2) Measured at 1m and with tolerance of +3dB(A).</p> <p>(3) Approximate weight subject to changes after manufacturing process.</p> <p>(4) At 100% of full load.</p>			<p>These are average values based on tests with sinusoidal power supply, subject to the tolerances stipulated in NEMA MG-1.</p>		
Rev.	Changes Summary		Performed	Checked	Date
Performed by					
Checked by				Page	Revision
Date	12/05/2026			1 / 3	

# DATA SHEET

## Single Phase Induction Motor - Squirrel Cage



Customer : \_\_\_\_\_

### Thermal protection

ID	Application	Type	Quantity	Sensing Temperature
1	Winding	Thermostat - 2 wires	1 x Phase	155 °C

Rev.	Changes Summary	Performed	Checked	Date
Performed by				
Checked by			Page	Revision
Date	12/05/2026		2 / 3	

# LOAD PERFORMANCE CURVE

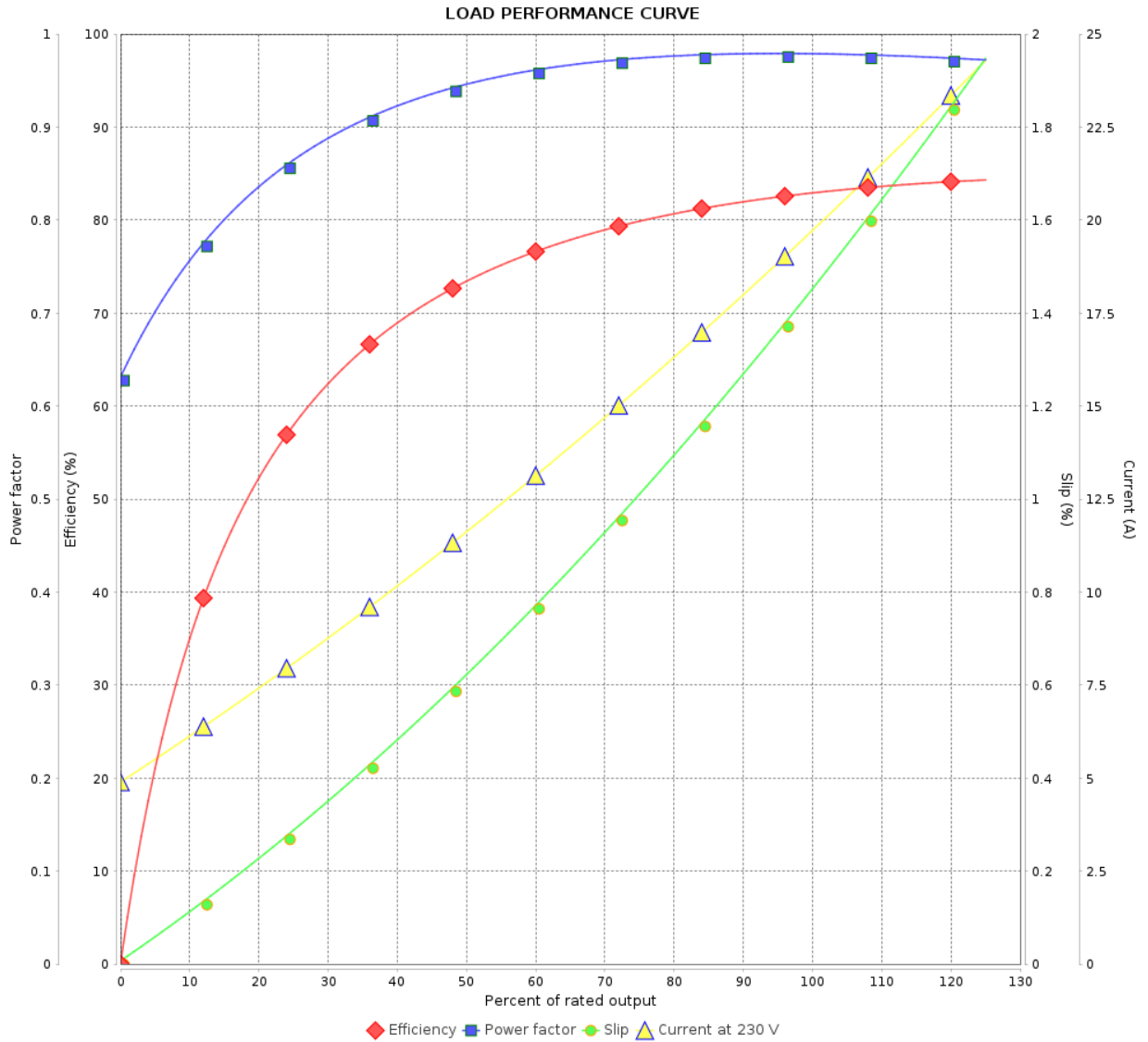
Single Phase Induction Motor - Squirrel Cage



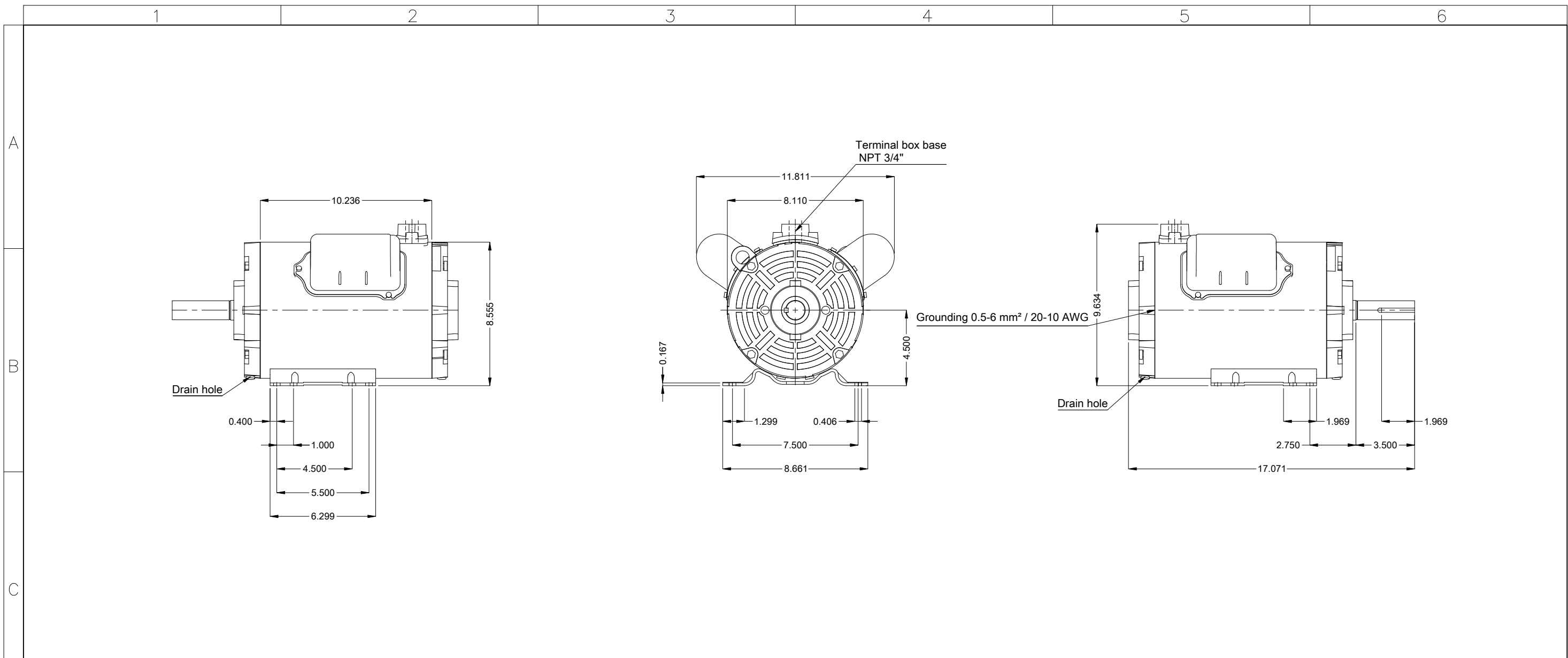
Customer :

Product line : Rolled Steel Grain Dryer Single-Phase

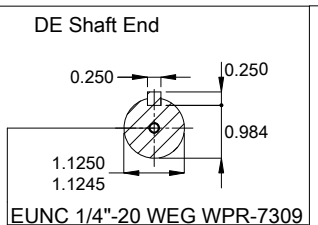
Product code : 13976275



Rev.	Changes Summary	Performed	Checked	Date
Performed by		Page 3 / 3		Revision
Checked by				
Date				



Mounting MARKET F-3/B3T  
 Mounting B3T



5.0-7.5 HP 02 Poles 60 Hz										A	
Scale 1 : 6											
HYBRISUSER										00	
ECM	LOC	SUMMARY OF MODIFICATIONS					EXECUTED	CHECKED	RELEASED	DATE	VER
EXECUTED	HYBRISUSER	SINGLE PH. MOTOR ROLLED STEEL GRAIN DRYER FRAME 182/4TZ IP55 TEAO					PREVIEW				
CHECKED							WDD				00
RELEASED							SHEET				1 / 1
REL. DATE											