

# DATA SHEET



## Three Phase Induction Motor - Squirrel Cage

Customer :						
Product line		: W22 Brake Motor NEMA Premium Efficiency Three-Phase		Product code :		14742134
Frame	:	143/5TC		Locked rotor time	:	25s (cold) 14s (hot)
Output	:	1.5 HP (1.1 kW)		Temperature rise	:	80 K
Frequency	:	60 Hz		Duty cycle	:	Cont.(S1)
Rated voltage	:	575 V		Ambient temperature	:	-20°C to +40°C
Poles	:	4		Altitude	:	1000 m.a.s.l.
Rated current	:	1.68 A		Protection degree	:	IP55
	:	8.4x(Code L)		Cooling method	:	IC411 - TEFC
Rated speed	:	1755 rpm		Mounting	:	F-1
Rated torque	:	0.620 kgfm		Rotation <sup>1</sup>	:	Both (CW and CCW)
Insulation class	:	F		Noise level <sup>2</sup>	:	51.0 dB(A)
Service factor	:	1.25		Starting method	:	Direct On Line
Moment of inertia (J)	:	0.0060 kgm <sup>2</sup>		Approx. weight <sup>3</sup>	:	27.3 kg
Design	:	B				
Output	50%	75%	100%	Foundation loads		
Efficiency (%)	82.5	85.5	86.5	Max. traction	:	48 kgf
Power Factor	0.54	0.67	0.76	Max. compression	:	75 kgf
Losses at normative operating points (speed;torque), in percentage of rated output power						
P1 (0,9;1,0)	P2 (0,5;1,0)	P3 (0,25;1,0)	P4 (0,9;0,5)	P5 (0,5;0,5)	P6 (0,5;0,25)	P7 (0,25;0,25)
14.7	12.1	12.0	8.7	6.1	4.9	3.6
		<u>Drive end</u>		<u>Non drive end</u>		
Bearing type	:	6205 ZZ		6204 ZZ		
Sealing	:	V'Ring		Lip Seal		
Lubrication interval	:	-		-		
Lubricant amount	:	-		-		
Lubricant type	:		00088			
Notes						
This revision replaces and cancel the previous one, which must be eliminated. (1) Looking the motor from the shaft end. (2) Measured at 1m and with tolerance of +3dB(A). (3) Approximate weight subject to changes after manufacturing process. (4) At 100% of full load.				These are average values based on tests with sinusoidal power supply, subject to the tolerances stipulated in NEMA MG-1.		
Rev.	Changes Summary			Performed	Checked	Date
Performed by						
Checked by					Page	Revision
Date	12/05/2026				1 / 3	

# DATA SHEET

## Three Phase Induction Motor - Squirrel Cage



Customer : \_\_\_\_\_

### Brake information

Voltage: 525-575 V  
Brake Torque: 1.63 kgfm

Rev.	Changes Summary	Performed	Checked	Date
Performed by				
Checked by			Page	Revision
Date	12/05/2026		2 / 3	

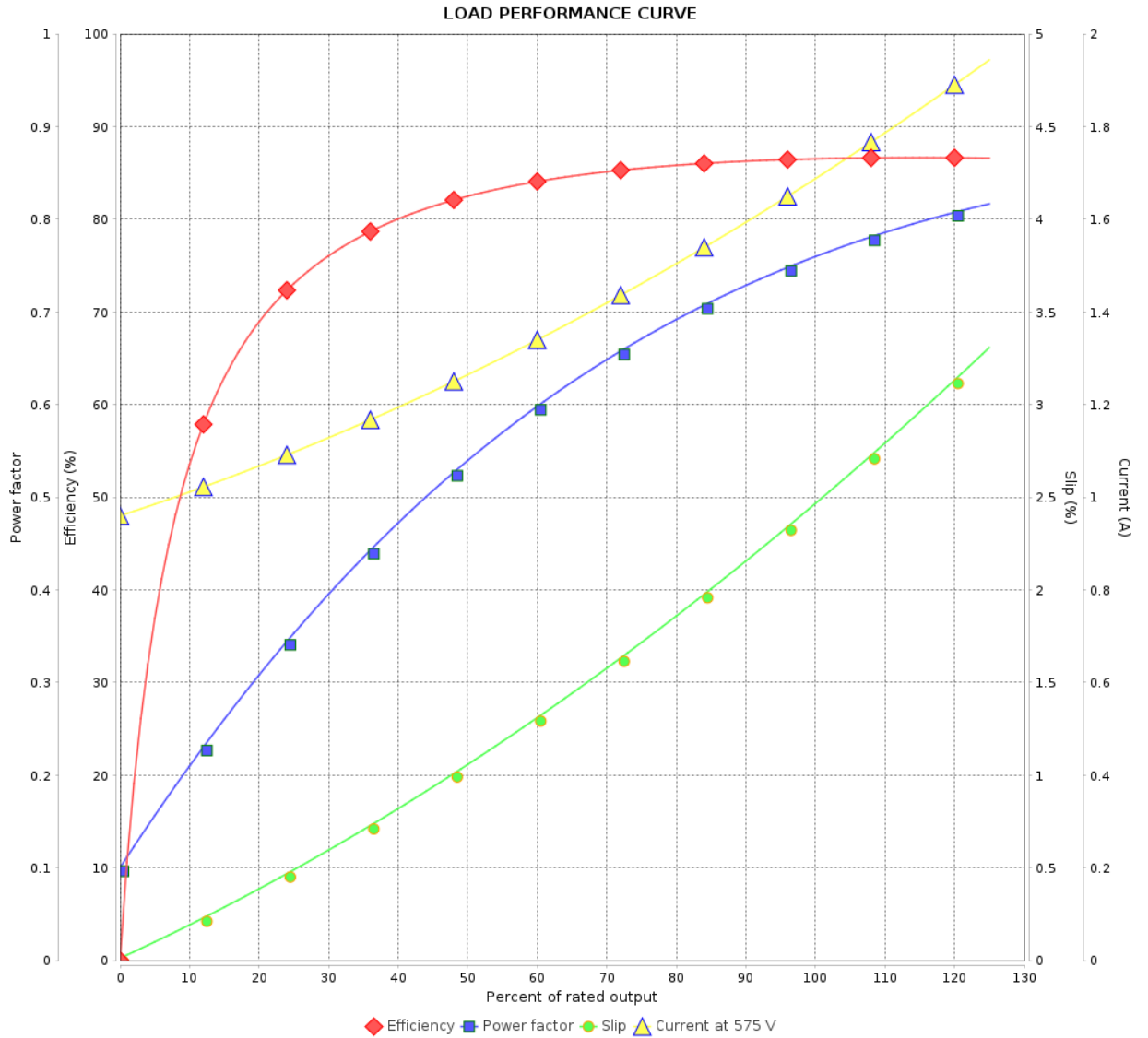
# LOAD PERFORMANCE CURVE

## Three Phase Induction Motor - Squirrel Cage

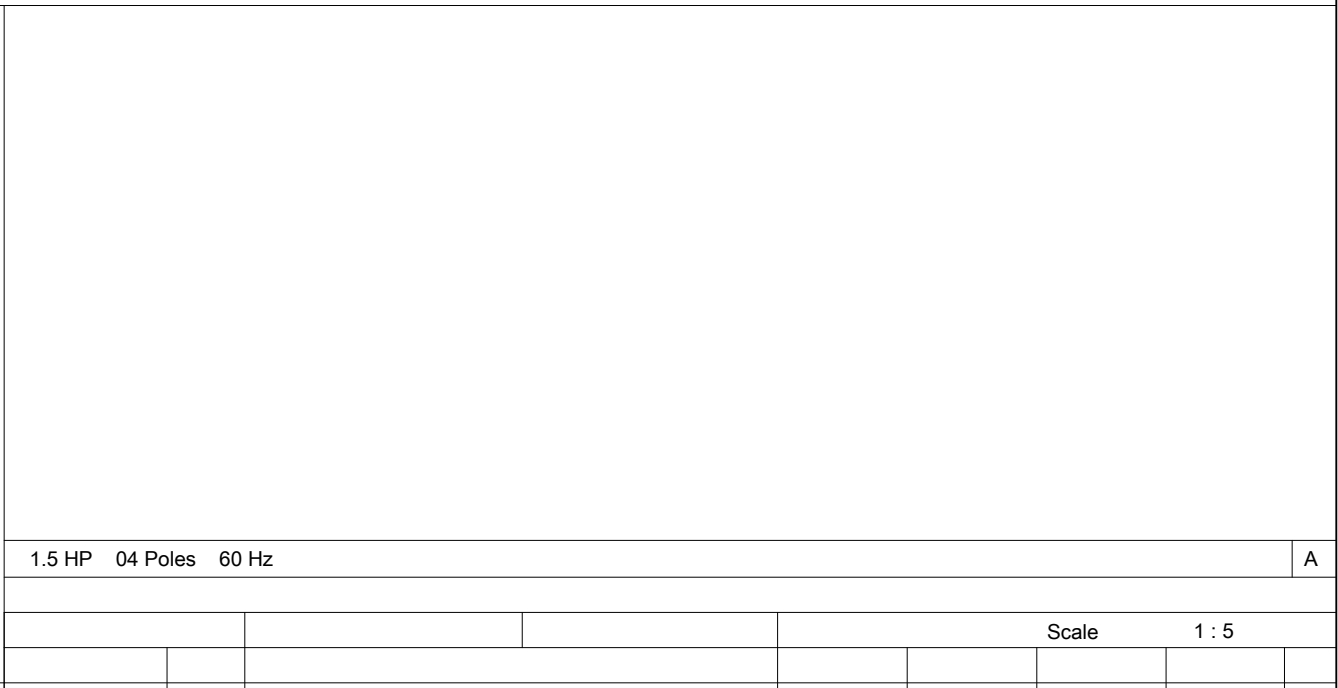
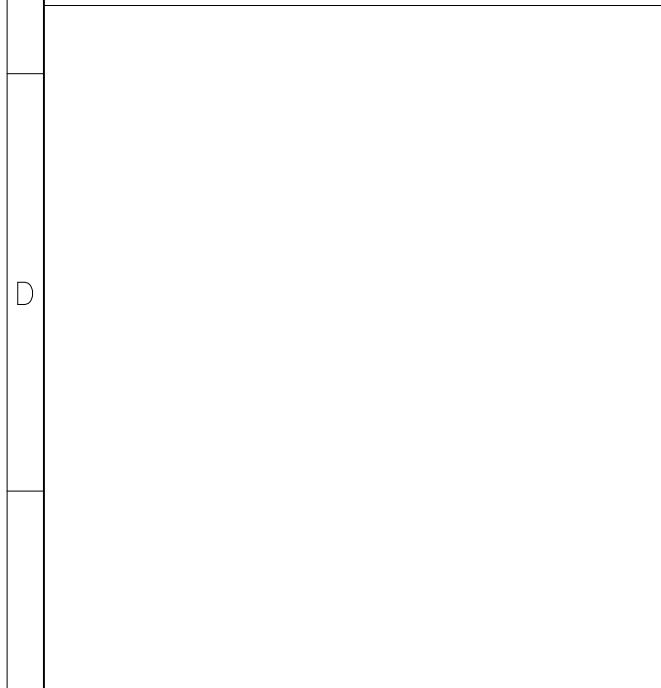
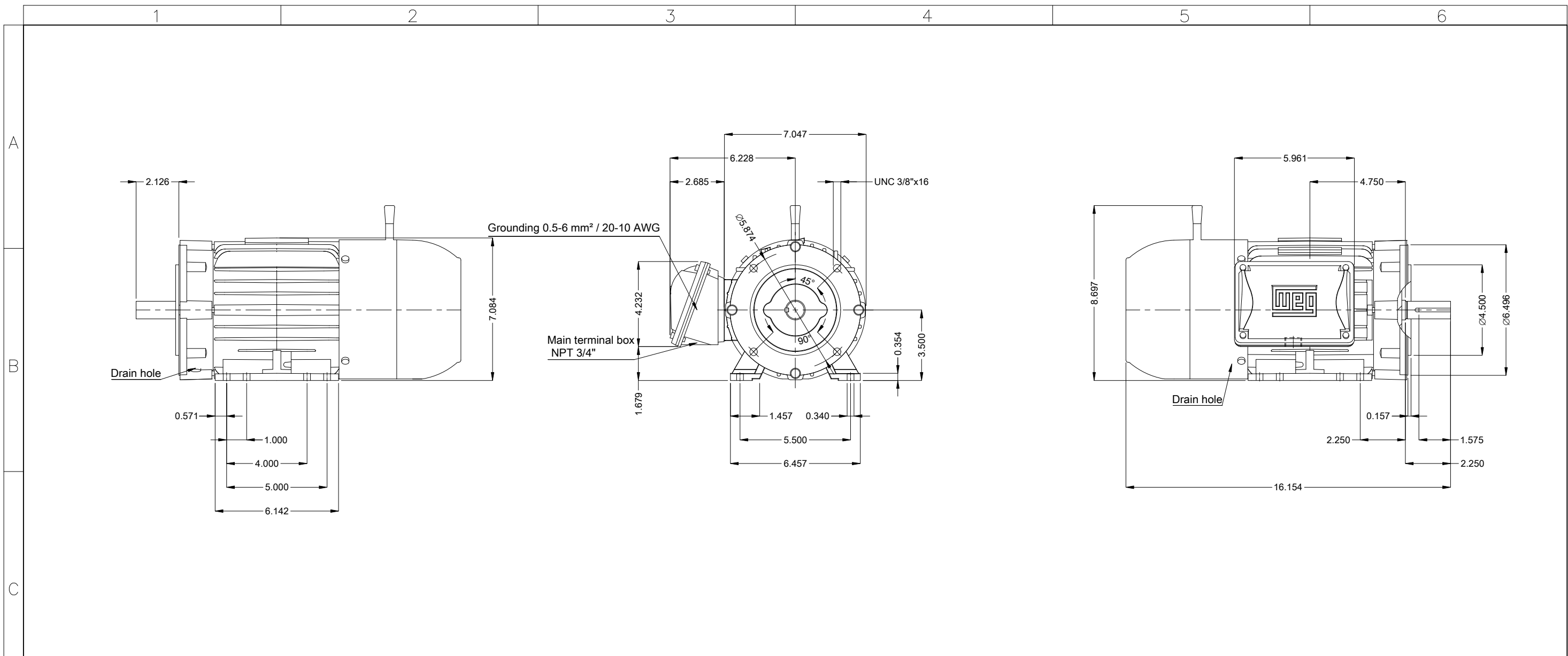


Customer : \_\_\_\_\_

Product line : W22 Brake Motor NEMA Premium Efficiency Three-Phase      Product code : 14742134



Rev.	Changes Summary	Performed	Checked	Date
Performed by		Page 3 / 3		Revision
Checked by				
Date				



With brake 10 (16 Nm)
Brake voltage 525-575 V
Color RAL 5009
Painting plan 207A
Mounting NEMA F-1
Mounting B34D



1.5 HP 04 Poles 60 Hz										A
Scale 1 : 5										
					HYBRISUSER					00
ECM	LOC	SUMMARY OF MODIFICATIONS			EXECUTED	CHECKED	RELEASED	DATE	VER	
EXECUTED	HYBRISUSER	THREE PH. MOTOR W22 BRAKE MOTOR NEMA PREM. EFF.								
CHECKED		FRAME 143/5TC IP55 TEFC								
RELEASED										
REL. DATE										
					PREVIEW		WDD 00		SHEET 1 / 1	